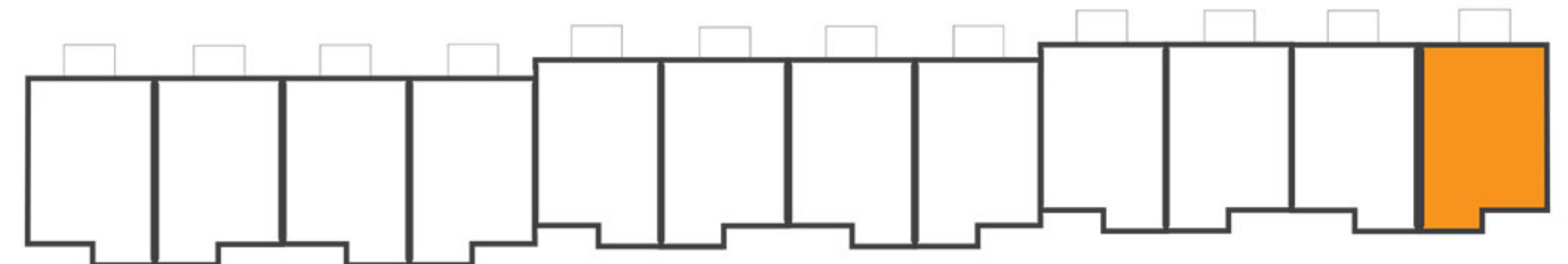


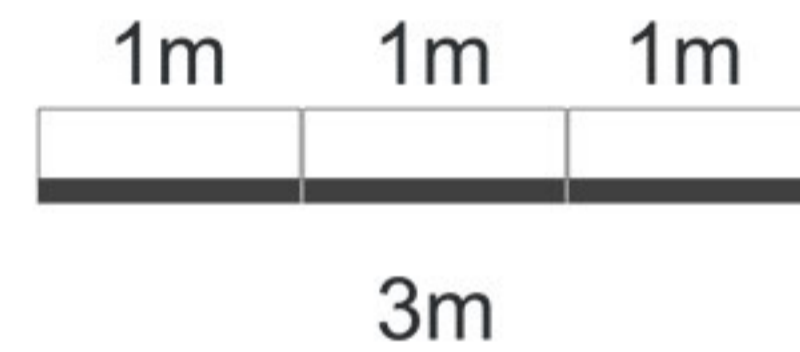
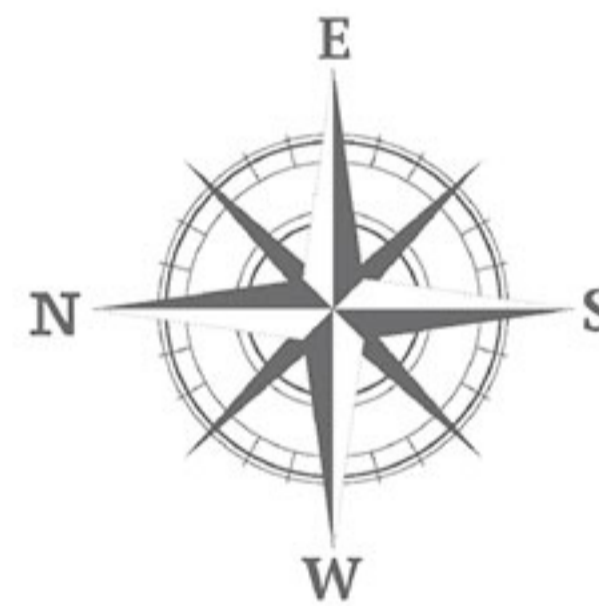
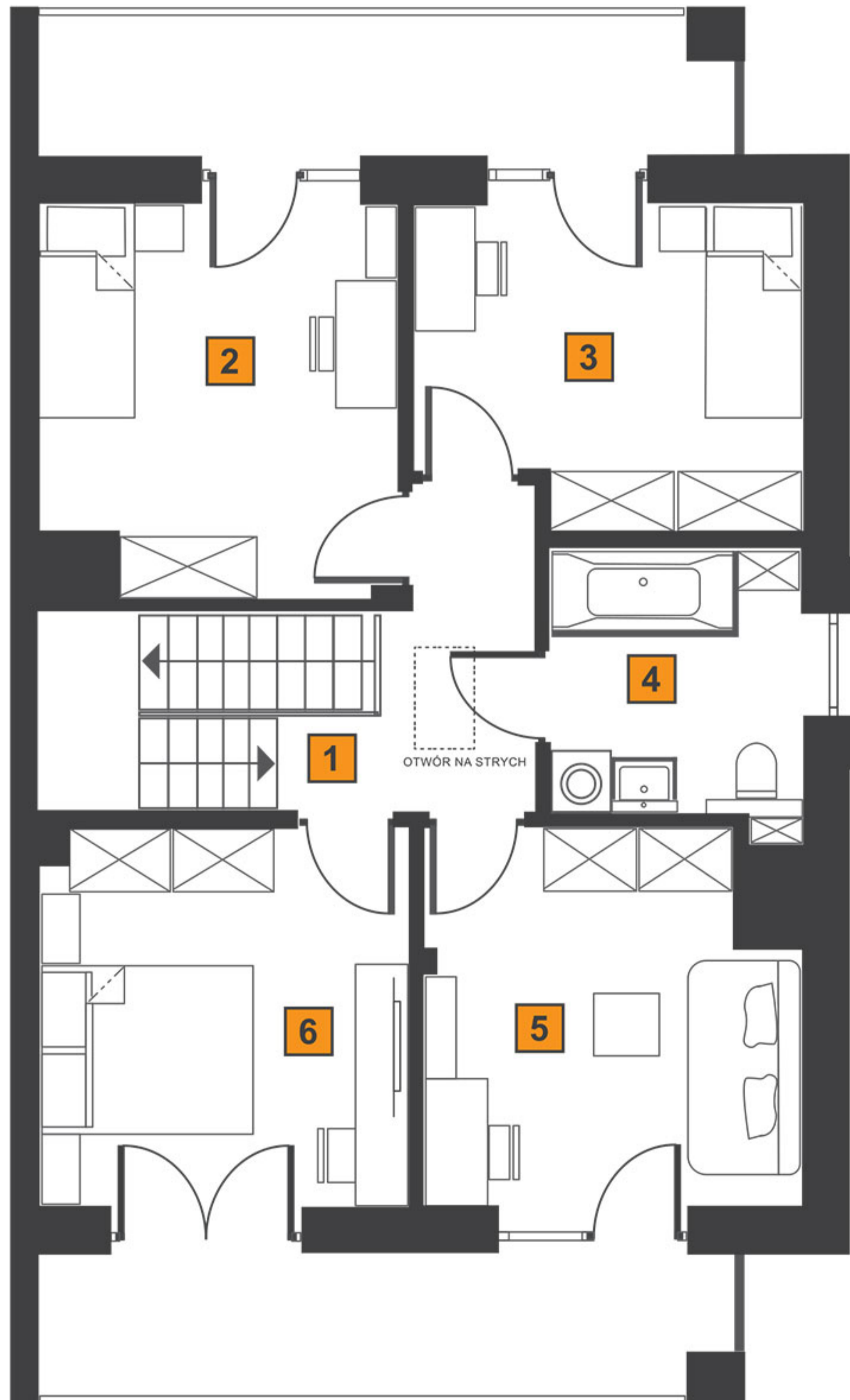
## DOM NR 12

|   | PARTER          | 68,31 m <sup>2</sup> (71,31 m <sup>2</sup> ) |  |
|---|-----------------|--|--|
| 1 | WIATROŁAP       | 3,60 m <sup>2</sup>                          |  |
| 2 | GARAŻ           | 17,65 m <sup>2</sup> (20,65 m <sup>2</sup> ) |  |
| 3 | HOL             | 4,55 m <sup>2</sup>                          |  |
| 4 | SCHODY          | 5,22 m <sup>2</sup>                          |  |
| 5 | SALON + KUCHNIA | 30,27 m <sup>2</sup>                         |  |
| 6 | ŁAZIENKA        | 2,93 m <sup>2</sup>                          |  |
| 7 | KOTŁOWNIA       | 4,09 m <sup>2</sup>                          |  |

**CAŁKOWITA POWIERZCHNIA UŻYTKOWA DOMU  
Z GARAŻEM 125,14m<sup>2</sup>**







## DOM NR 12

|   | PODDASZE | 56,83 m <sup>2</sup> |
|---|----------|----------------------|
| 1 | HOL      | 4,94 m <sup>2</sup>  |
| 2 | POKÓJ    | 11,80m <sup>2</sup>  |
| 3 | POKÓJ    | 10,38 m <sup>2</sup> |
| 4 | ŁAZIENKA | 5,94 m <sup>2</sup>  |
| 5 | POKÓJ    | 11,69 m <sup>2</sup> |
| 6 | POKÓJ    | 12,08 m <sup>2</sup> |

**CAŁKOWITA POWIERZCHNIA UŻYTKOWA DOMU  
Z GARAŻEM 125,14m<sup>2</sup>**

